

DOE

Technical Workshop for 2009 Congestion Study

David Meyer

**Office of Electricity Delivery and
Energy Reliability**

March 25, 2009



DOE's Transmission Responsibilities Under EPACT Section 1221(a)

- **Conduct a national transmission congestion study every three years**
 - **First study published in August 2006**
- **Designate National Interest Electric Transmission Corridors if appropriate**
 - **Mid-Atlantic and Southwest corridors designated in October 2007**



DOE's Process for Developing the 2009 Congestion Study

- **Six public workshops have been held**
 - 6/11 San Francisco, CA
 - 6/18 Oklahoma City, OK
 - 7/09 Hartford, CT
 - 7/29 Atlanta, GA
 - 8/06 Las Vegas, NV
 - 9/17 Chicago, IL
- **Extensive set of public comments has been received -- 38 to date**
- **Technical Workshop held 3/25-26, Chicago, IL**
- **Final report to be published August 2009**



Purposes of This Technical Workshop

- **DOE has supported development of information on historic congestion.**
- **DOE noted public comment that major industry-led studies would be available in time to be considered.**
- **Analysts supported by DOE have reviewed flow data for 2007, and will present their findings here. We welcome discussion of the findings and the congestion metrics used.**
- **DOE seeks a final round of technical input and comment prior to preparation of the 2009 Congestion Study.**



DOE's Website for the 2009 Congestion Study

Please send any additional comments to

<http://congestion09.anl.gov/>

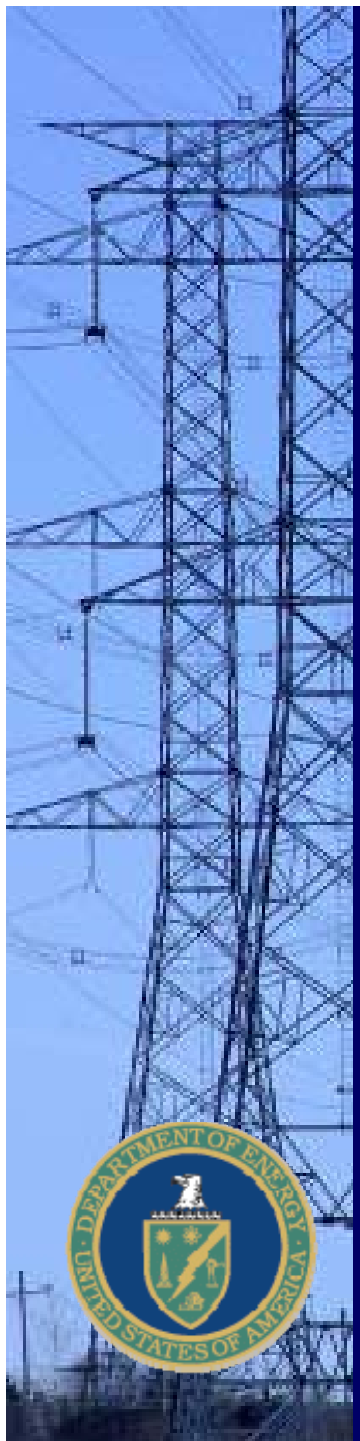


Contact Information

David Meyer
Senior Advisor
Office of Electricity Delivery and Energy
Reliability
U.S. Department of Energy
at:

David.Meyer@hq.doe.gov

phone: 202-586-1411



DOE's 2009 Congestion Study

David Meyer
Office of Electricity Delivery and
Energy Reliability
March 26, 2009



DOE's Transmission Responsibilities Under EPACT Section 1221(a)

- **Conduct a national transmission congestion study every three years**
 - **First study published in August 2006**
- **Designate National Interest Electric Transmission Corridors if appropriate**
 - **Mid-Atlantic and Southwest corridors designated in October 2007**



DOE's Process for Developing the 2009 Congestion Study

- **Six public workshops**
 - 6/11 San Francisco, CA
 - 6/18 Oklahoma City, OK
 - 7/09 Hartford, CT
 - 7/29 Atlanta, GA
 - 8/06 Las Vegas, NV
 - 9/17 Chicago, IL
- **Public comments**
 - 38 received to date
- **Technical workshop**
 - 3/25-26 Chicago, IL
- **Final report to be published August 2009**

<http://congestion09.anl.gov/>



DOE's 2006 Congestion Study Identified Three Kinds of Congestion Areas

- ***Critical Congestion Areas:*** Large, densely populated, economically vital areas experiencing recurrent adverse impacts from congestion.
- ***Congestion Areas of Concern:*** Areas with existing or emerging large-scale congestion problems but where further study is needed to determine appropriate action
- ***Conditional Congestion Areas:*** Areas where significant congestion would occur if major new generation is developed without associated new transmission capacity



2009 Study Will Review Congestion In Areas Identified in 2006, and May Identify New Areas

- **Critical**
 - Metropolitan NY - Mid-Atlantic coastal area
 - Southern California
- **Concern**
 - New England
 - Seattle-Portland
 - SF Bay Area
 - Phoenix-Tucson
- **Conditional**
 - Montana-Wyoming
 - Dakotas-Minnesota
 - Kansas-Oklahoma
 - Illinois-Indiana and Upper Appalachia
 - Southeastern states



Scope of Reviews

- **Load-side developments**
 - Load growth
 - Energy efficiency and demand response programs
 - Changes in generation, including distributed generation
- **Transmission**
 - Status of major projects
 - Findings from transmission planning studies
- **Generation**
 - Announced plans/project status/cancellations and retirements
 - State and Federal policies



Likely Topics for 2009 Study

- ***Critical Areas and Areas of Concern:***
 - Many positive actions, including energy efficiency, demand response and announcements of additional local generation.
 - Little new transmission added, though much is now planned or being discussed.
- ***Conditional Areas:***
 - Much emphasis on renewables, but note also announcements of new nuclear projects; cancellations of coal plants a concern.
 - Planning for transmission needed for conditional resources best addressed through interconnection and regional planning forums; Congestion Study is not a planning process.
- ***ARRA (2009) requires DOE to address obstacles to development of transmission for renewables, including litigation to block transmission projects.***



Differences between 2006 and 2009 Congestion Study Methods

	2006 Study	2009 Study
Historic – Western	Quantitative review of path utilization (WCATF, supported by OATI)	WECC/TEPPC review of path utilization and schedules (supported by OATI)
Historic – Eastern	Review of available studies and information	OATI review of public info posted on LMP, OASIS, and IDC
Prospective – Western	WCATF projections for 2008, 2015	TEPPC projections for [year(s)?]
Prospective - Eastern	CRA – 2008, 2011	Review of others' projections

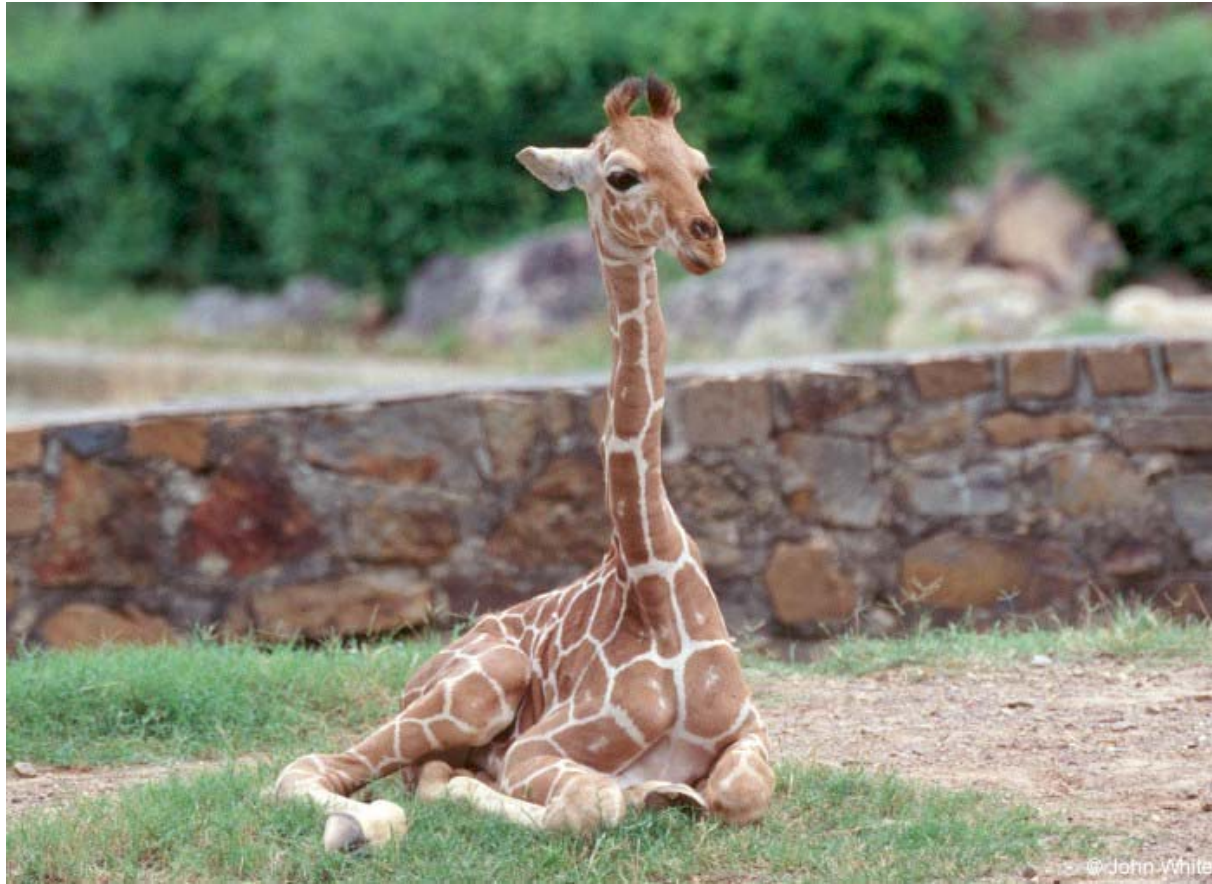


Concluding Remarks

- **DOE's 2009 Congestion Study will be based on an extensive and public consultative process.**
- **The Study will be based on a combination of information developed through public comments, independent analyses of historic congestion, and studies of future congestion conducted by others.**
- **Factors affecting congestion in the 3 classes of areas identified in the 2006 will be reviewed; new areas may also be identified.**
- **DOE will issue its final report in August 2009.**
- **Designation of National Interest Electric Transmission Corridors will NOT be addressed in the DOE Congestion Study.**



Questions?





Contact Information

David Meyer
Senior Advisor
Office of Electricity Delivery and Energy
Reliability
U.S. Department of Energy
at:

David.Meyer@hq.doe.gov

phone: 202-586-1411